

# TEKLAND

## GENERAL INDUSTRIAL PRESSURE GAUGES, VACUUM GAUGES, COMPOUND GAUGES.

- SUITABLE FOR MEASUREMENT OF AIR PRESSURE, WATER PRESSURE, VACUUM PRESSURE, TOWN GAS, ETC.
- DIAMETER = 1", 1.5", 2", 2.5", 3", 4", 5", 6" (25, 40, 50, 60, 75, 100, 125, 150,)
- CONNECTION = 1/8", 1/4", 3/8", 1/2" NPT OR PT
- PRESSURE GAUGE = -76cm Hg ~ 0 ~ 500kg/cm<sup>2</sup> ( in Hg / psi)
- MATERIAL = CASE: STEEL, STAINLESS STEEL, PLASTIC.
- ACCURACY =  $\pm 1.5\%$ F.S.



P-A



P-AD



P-B



P-BD



V-B



C-A

## LIQUID FILLED PRESSURE GAUGES, VACUUM GAUGES, COMPOUND GAUGES.

- SUITABLE FOR THE HEAVY DUTY SERVICE WHERE PRESSURE IMPULSE, SHOCK AND VIBRATION ARE ENCOUNTERED.
- DIAMETER = 1.5", 2", 2.5", 3", 4", 6", (40, 50, 60, 75, 100, 150 mm)
- CONNECTION = 1/8", 1/4", 3/8", 1/2" NPT OR PT
- PRESSURE RANGE = -76 cm Hg ~ 0 ~ 1000 kg/cm<sup>2</sup> (in Hg / psi)
- MATERIAL = CASE , BEZEL : SUS304,  
WETTED PARTS : BRASS
- ACCURACY =  $\pm 1.5$  % F.S.



**L-A**



**L-AD**



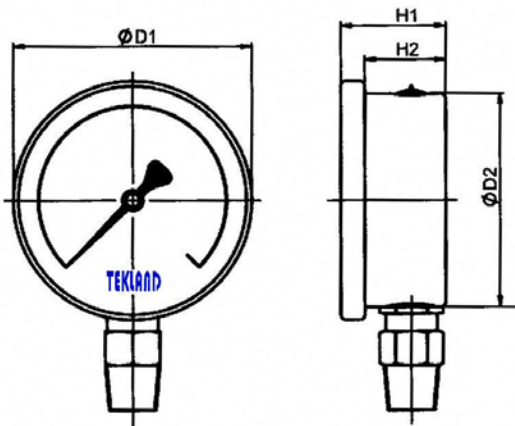
**L-DU**



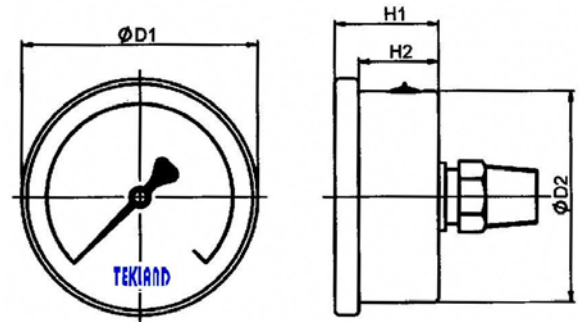
**L-BD**

### TYPES & DIMENSIONS

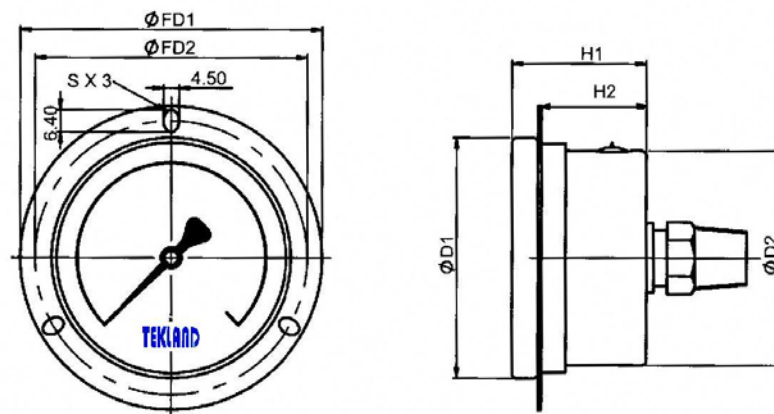
**TYPE A: BOTTOM CONNECTION**



**TYPE B: BACK CONNECTION**



**TYPE C: BACK CONNECTION WITH FRONT FLANGE**



**DIMENSIONS(MM)**

DIAL	TYPE	D1	D2	H1	H2	FD1	FD2
40	A/B	47.5 / 47.5	41.1 / 41.1	26.4 / 25	20.7 / 19.4		
50	A/B	57.5 / 57.5	50.9 / 50.9	27.5 / 27.5	23 / 23		
	C	57.5	50.8	27	20.6	69.8	64.5
63	A/B	69.3 / 69.3	61.8 / 61.8	29.5 / 29.5	23 / 22.8		
	C	69.3	61.8	29.5	22.8	88	79
75	A/B	82.5 / 82.5	73.2 / 73.2	35.7 / 35.7	29 / 29		
	C	82.5	73.2	37	24	104.9	94
100	A/B	105.8/105.8	98.2 / 98.2	37.2 / 37	30 / 30		
	C	105.8	98.2	37.2	28.5	131.5	117

## STAINLESS STEEL PRESSURE GAUGES, VACUUM GAUGES, COMPOUND GAUGES.

- HIGH QUALITY STAINLESS STEEL MADE, FEATURING CORROSION AND HIGH TEMPERATURE PROOF AND WITH HIGH LOAD-SUSTAIN CHARACTERISTICS. SUITABLE FOR MEASUREMENT OF PETROCHEMICAL INDUSTRIES. IT ALSO CAN BE USED FOR MEASURING THE PRESSURE FOR ANY PIECE OF EQUIPMENT THAT IS CHARGED WITH AMMONIA DUE TO ITS HIGHLY INTENSIFIED CONSTRUCTION.
- DIAMETER = 2.5",3",4",5",6" (60,75,100,125,150 mm)
- CONNECTION = 1/4", 3/8", 1/2", NPT OR PT.
- MATERIAL = CASE , BEZEL : SUS304  
WETTED PARTS : SUS304, SUS316
- ACCURACY =  $\pm 1.5\%F.S.$



**SS-OA**



**SS-OCA**



**SS-OAD**



**SS-OBD**



**SS-ODU**

## PRESSURE GAUGES , VACUUM GAUGES , COMPOUND GAUGE WITH ELECTRICAL CONTACT

- SUITABLE FOR AREAS WITH PRESSURE VARIATION. CAN BE USED AS AN ELECTRICAL CIRCUIT SWITCH TO AVOID EQUIPMENT BREAKDOWN FROM HIGH SWITCH FREQUENCY.
- DIAMETER= 4" (100 mm)
- CONNECTION = 3/8", 1/2" PT.
- PRESSURE RANGE = -76cm Hg ~0~ 1000kg/cm<sup>2</sup> (in Hg / psi)
- MATERIAL = CASE & BEZEL: SUS304  
WETTED PARTS : SUS316 OR BRASS
- ACCURACY = +/- 1.5%F.S.



**BS-HL**



**DU-H**

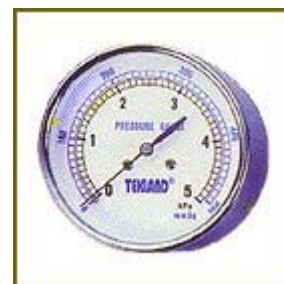
## LOW PRESSURE GAUGES , VACUUM GAUGES

LOW PRESSURE GAUGES ARE THE IDEAL CHOICE WHEN MEASURING VERY LOW PRESSURE AND VACUUM GASEOUS MEDIA.

- SUITABLE FOR TOWN GAS INDUSTRY, MEDICAL APPARATUSES & EQUIPMENT ETC . FOR MEASURING 100MM WATER INJECTION TO 10 PSI POSITIVE & NEGATIVE PRESSURE.
- DIAMETER = 2.5", 3", 4"
- PRESSURE RANGE: -500/0 mmAQ (mm H<sub>2</sub>O) ~ 0/5000 mmAQ (mm H<sub>2</sub>O)
- OPERATING TEMPERATURE: WORKING TEMPERATURE 60°C; AMBIENT TEMPERATURE -20 ~ 60°C
- ACCURACY = 1.5 %F.S.



**Q-A**



**Q-AD**

## FREON PRESSURE GAUGES , COMPOUND GAUGES

- MATERIAL AND WELDING METHOD USED CAN OBTAIN EXCELLENT LEAKING-PROOF, PRESSURE IMPULSE-PROOF AND VIBRATION-PROOF EFFECTS. SUITABLE FOR AIR CONDITION SYSTEM R12, 22, 502, R134.
- DIAMETER = BOTTOM CONNECTION: 2.6",  
LIQUID FILLED TYPE: 2.5"  
BACK CONNECTION : 2.5"
- CONNECTION = BOTTOM CONNECTION :1/8" NPT  
BACK CONNECTION = 7/16 " UNF
- PRESSURE RANGE = LOW PRESSURE = -76 cmHg ~0~250psi (15kg/cm<sup>2</sup>) ,  
HIGH PRESSURE = 0~500 psi (30 kg/cm<sup>2</sup>)
- MATERIAL = CASE & BEZEL: PLASTIC, STEEL, STAINLESS STEEL.  
WETTED PARTS : BRASS.
- ACCURACY =  $\pm 1.5\%$ F.S.



**AF3**



**L-AF5**



**L-AF3**



**AF5**

## SPRAYER'S GAUGE

- DESIGNED TO STAND PULSATING PRESSURE AND VIBRATION FOR THE AGRICULTURAL MACHINERY. FOR PROPER USAGE, USED WITH ATOMIZERS
- DIAMETER = 2"
- CONNECTION = 1/4" NPT OR PT
- PRESSURE RANGE = 0 - 50 kg/cm<sup>2</sup>
- MODEL = SP-A : PLASTIC CASE  
SP-SA : SUS304 CASE
- ACCURACY =  $\pm 1.5\%$ F.S.



SPRAYER'S GAUGE

## CONTRACTOR'S GAUGE

- THE CONTRACTOR'S GAUGE IS SPECIALLY SUITED FOR HEATING AND AIR CONDITIONING SYSTEMS.
- DIAMETER = 3.5" & 4.5"
- CONNECTION = 1/4" NPT
- PRESSURE GAUGE = 30" Hg ~ 0 ~ 600 PSI
- MATERIAL = CASE = SUS304



SP-A

## TIRE GAUGE (BALL)

ESSENTIAL TO CHECK IF VEHICLES'S TYRES ARE INFLATED CORRECTLY.



PRESSURE GAUGE  
FOR TIRE (BALL)



## DIAPHRAGM PRESSURE GAUGE

DIAPHRAGM ELEMENTS ARE DESIGNED TO PREVENT SOME SERVICE MEDIA FROM ENTERING INTO THE PRESSURE GAUGE OR TO BE EASY FOR CLEARING THE PLACE WHERE THE PRECIPITATION IS RESIDED. IT IS SUITABLE FOR MEASURING THE PRESSURE OF THE SERVICE MEDIA WHICH IS HIGH CORROSIVE AND EASILY CRYSTALLIZED, OR WITH FLOATING SOLID.



**ANGLE FLANGE EXTRA LONG STYLE**



**DIRECT OUTER THREAD (EXTRA LONG) STYLE**



**DIRECT OUTER THREAD STYLE**



**HYGIENE STYLE FOR FOOD**



**DUAL FLANGES STYLE**



**SINGLE FLANGE STYLE**



**LONG DISTANCE STYLE**

## DIAPHRAGM PRESSURE GAUGES

Connection Sealed Type No. 3 &  
Separable Type No. 4



### APPLICATIONS

Diaphragm pressure gauges are used when medium is corrosive, contaminated, viscous or with particles. Type No. 3 & 4 series are particularly used in chemical and petrochemical industry, mechanical engineering, plant and apparatus construction.

### SPECIFICATIONS

<b>Instruments:</b>	All series pressure gauges and pressure transmitters are available
<b>Connection (Thread)</b>	1/4" ; 3/8" ; 1/2" ; 3/4" ; 1" PT / NPT, male or female thread
<b>Upper diaphragm Housing</b>	SS304 standard, SS316 available Diameter Ø70 & Ø90 mm
<b>Lower diaphragm Housing</b>	SS304 ; SS316 Diameter Ø70 & Ø90 mm
<b>Diaphragm</b>	SS316 standard
<b>Screws on housing</b>	SS304 standard, other materials available made-to-order
<b>Temperature</b>	medium +80°C
<b>Filling fluid</b>	Glycerin or silicon oil standard
<b>Pressure ranges</b>	General type: 0 / 0.6 ~ 0 / 60 kg/cm <sup>2</sup> (bar), positive, negative or compound